

ONSCREENKEYS 5

Windows XP[®] / Windows Vista[®] / Windows 7[®] / Windows 8[®] / Windows 10[®]

PRODUCT DESCRIPTION

This smart on-screen keyboard with virtual mouse click features and speech output allows for quick typing and working with the computer, even if the hardware keyboard or computer mouse can not or only in parts be used.

OnScreenKeys can be used to type into any application, be it word processing software, a spreadsheet program, email software or an internet browser.

OnScreenKeys is often used on touch-screen systems or in combination with eye trackers, head mice and many other alternative input devices..

Parameters such as the keyboard's size and your working speed can be freely adjusted. Text macros and personalised phrases make typing much easier.

OnScreenKeys contains more than 40 languages and allows for quick language changing so that even foreign-language texts can quickly be typed and spoken by the computer voice..

OnScreenKeys uses the installed system voices and also allows connection to any other SAPI voice.. Available only in the 'Deluxe' version



THANK YOU

Dear user!

Thank you very much for choosing **OnScreenKeys**.

We tried our very best to create an effective yet easy-to-operate program for you.

OnScreenKeys is continually being improved. Updates can be downloaded from our website.

We hope that our product meets your expectations.

If you have any questions, you may reach us...

... by phone: 0049 - (0)160 - 93 27 72 41

... by email: mail@tomweber-software.com

I hope you have fun trying the software.

Tom Weber

PRODUCT ACTIVATION

After the 60-day trial period, activating the software is necessary.

To activate the software, you will need the Product Key, which can be found on the next page, as well as the Installation Key, which will be generated individually when installing the software. This means that the product can only be activated after it has been installed.

Proceed as follows to activate **OnScreenKeys**:

- 1 Install **OnScreenKeys** on your computer, and start the software.
- 2 Select the option '**I purchased the software and want to activate it now.**'. Afterwards click the button **OK**.
- 3
 - a) If your computer is connected to the internet, enter your Product Key in the appropriate textbox. Afterwards, click the button '**Activate online now**'. Then follow the instructions on the screen.
 - b) If your computer is connected to the internet, click the button '**Activate without internet connection**', and follow the instructions on the screen.

YOUR PRODUCT KEY

Your Product Key is:

INSTALLATION

If **OnScreenKeys** was delivered on a CD, put it in your computer's CD-ROM drive. The installation will start automatically.

If the installation from CD does not start automatically, **osksetup.exe** on the CD should be started manually.

INTRODUCTION

The software **OnScreenKeys** is a typing and communication aid for people who are unable to use the usual hardware keyboard or computer mouse.

The software clicks keys and mouse buttons automatically for the user. The user just needs to move the mouse pointer to the desired key, which will be triggered automatically after a certain dwell time.

OnScreenKeys is always shown on top of other windows so you can send text to any other window (eg word processing software, an internet browser etc).

In the 'Click' and 'Deluxe' versions, **OnScreenKeys** provides a mouse click feature with which mouse clicks can be executed even beyond the keyboard.

The 'Deluxe' version of **OnScreenKeys** provides a computer voice speech option through which typed text can be output by the computer's loudspeakers. Integration of any computer voices that comply with the SAPI standard is possible.

FIRST USE

To start the software, click the '**OnScreenKeys**' icon on your desktop, or open it from the '**OnScreenKeys**' program group in the Start menu.

The software will automatically detect the language of your Windows® version and configure itself accordingly.

You may choose a different language as well as edit many parameters in the configuration window. You may open up the Configuration Window by clicking the Settings button on the on-screen keyboard.



BASICS OVERVIEW

To type with **OnScreenKeys**, as when typing with the normal computer keyboard, a text window has to be open, and the blinking cursor has to be visible in that window.

When the program starts, a text editor will be opened up automatically.
You may deactivate this function in the Configuration Window or choose another text editor.

To trigger keys on the on-screen keyboard, just move the mouse pointer over the desired key and keep it there for a little while. The key will automatically be clicked after a certain 'dwell' time.
In the configuration window you may deactivate this auto-click function or change the dwell time.

Word auto-completion and word prediction

OnScreenKeys provides two ways to make typing faster:

> Word auto-completion: as soon as you type the first letter of a new word, word suggestions will be shown on the 10 word buttons, which you can type with a click.

> Next-word suggestion: as soon as you complete a word, the 10 most probable next words will be displayed.

Writing style adaption

OnScreenKeys provides a comprehensive dictionary by default. Additionally, the software learns new words and sentences as you type them and adapts to your writing style.

Additionally, personal documents and letters can be imported to make the software adapt to your writing style even quicker.

Phrases and text macros

You can write short phrases or entire paragraphs that you have previously stored with the click of a button.
Further information about this topic can be found on the following pages.

Speaking (available only in the 'Deluxe' version)

With speech output, each typed sentence will be spoken at a press of the Enter key. If the Enter key is then pressed again, the last sentence will be spoken once again.

You may configure **OnScreenKeys** so that each word is spoken immediately after typing it.

Automatic starting

You can set **OnScreenKeys** to automatically start with Windows®.

This option can be activated or deactivated in the Configuration Window in the 'Extras' tab.

DIFFERENCES FROM HARDWARE KEYBOARD

This is an overview of the keys and functions not found on the normal hardware computer keyboard:



Delete key

Deletes the last key



Delete word

Deletes the last word



Basic settings

Opens up the configuration window



Click-pause

Temporarily disables the auto-click

By triggering the lock, the auto-click function will be paused until it is activated again by a click on the same button.



Extended keys

Shows further keys (eg mathematical keys) and special commands



Word shift key

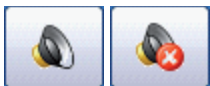
Changes the last typed word's case



Change dictionary/language

Temporarily changes the language

The corresponding keys, dictionary and computer voice will be set according to the newly selected language. The desired voice has to be selected in the configuration window first (available in the 'Deluxe' version only).



Temporarily disable/enable speech output



Enter (and speak last sentence)

MOUSE BAR (available in 'Click' and 'Deluxe' version only)

If you have problems pressing the normal computer mouse's buttons, you may emulate mouse clicks with **OnScreenKeys**.

Take a moment to think about which mouse click you will need to do (eg simple click, double click, right click, or drag and drop)..

For example, to open a file on the desktop, you will need to do a double click. Select the appropriate mouse click (see below), and move the mouse pointer to the location where the click should be done. After a short while, the mouse click will automatically be done at that location.



A click on this button opens the Mouse Button Bar:



Mouse click type overview:



Left click (simple click)



Double click



Right click



Drag and drop



Quit click functions and close mouse button bar

The mouse click parameters (eg movement tolerance, radius, tremor tolerance etc) can be adjusted in the configuration window.

SPEECH OUTPUT ('Deluxe' version only)

The speech output can be activated/deactivated by a click on the following button :



Depending on the current status, one of the following icons will be shown:



Speech output deactivated



Speech output activated



Speech output not available due to an error



The voice output is not available in the version that you purchased.

If the speech output function is activated, every typed line will be sent to the speech engine when the enter key is triggered.

If the Return key is pressed again, the last sentence will be spoken again.

You may configure **OnScreenKeys** so that each word is spoken immediately after typing it.

The computer voice that **OnScreenKeys** will be using can be selected in the configuration window.

If you communicate in multiple languages, you may select a different voice for each language.

PHRASES

A phrase is a text module which will be frequently used, eg your own name and postal address etc.

Up to 10 phrases can be set up in **OnScreenKeys**

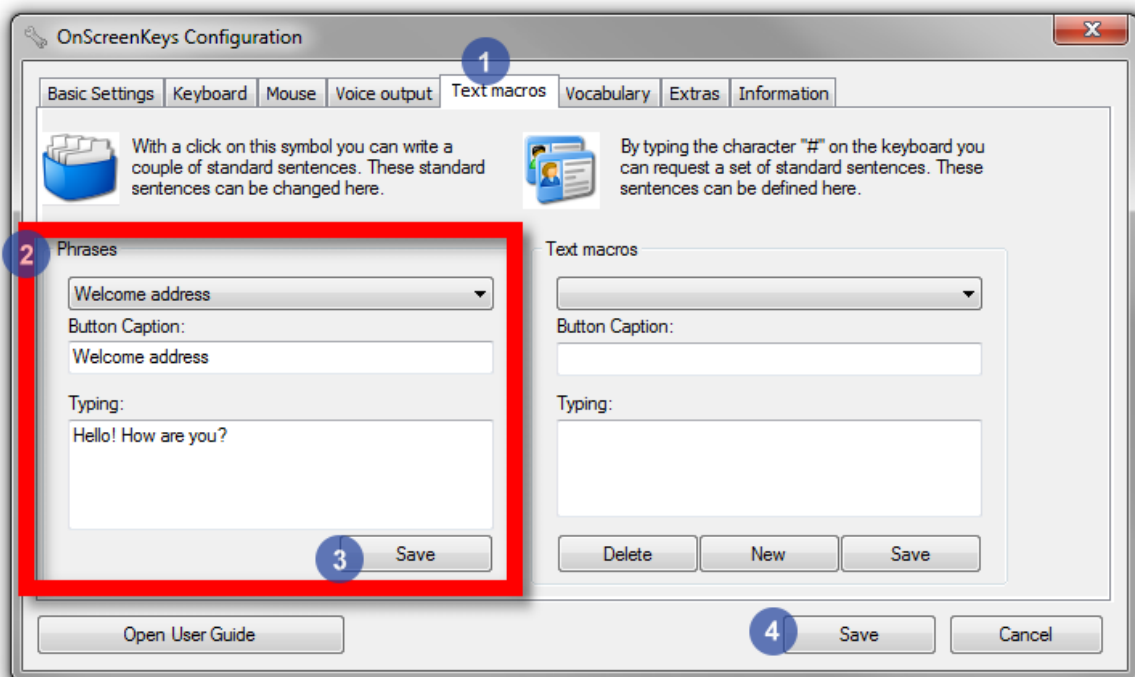
Setting up phrases:

Open up the Configuration Window, and click the 'Text Macros' tab.

Select a phrase from the list of available phrases, rename it if desired, and replace the text with text of your choice.

Afterwards, click the **"Save"** button that is located below the phrase that has just been edited. You may then proceed with editing another phrase.

When you have finished editing phrases, click the configuration window's 'Save' button.



Typing phrases:



Click the card box button.

Your customised phrases will now appear in the word buttons.

Click one of the buttons to have its underlying text written.

TEXT MACROS

With the help of the text macro function, an infinite number of paragraphs may be written.

A consistent naming scheme is recommended because you will need to invoke the pre-written text later by name.

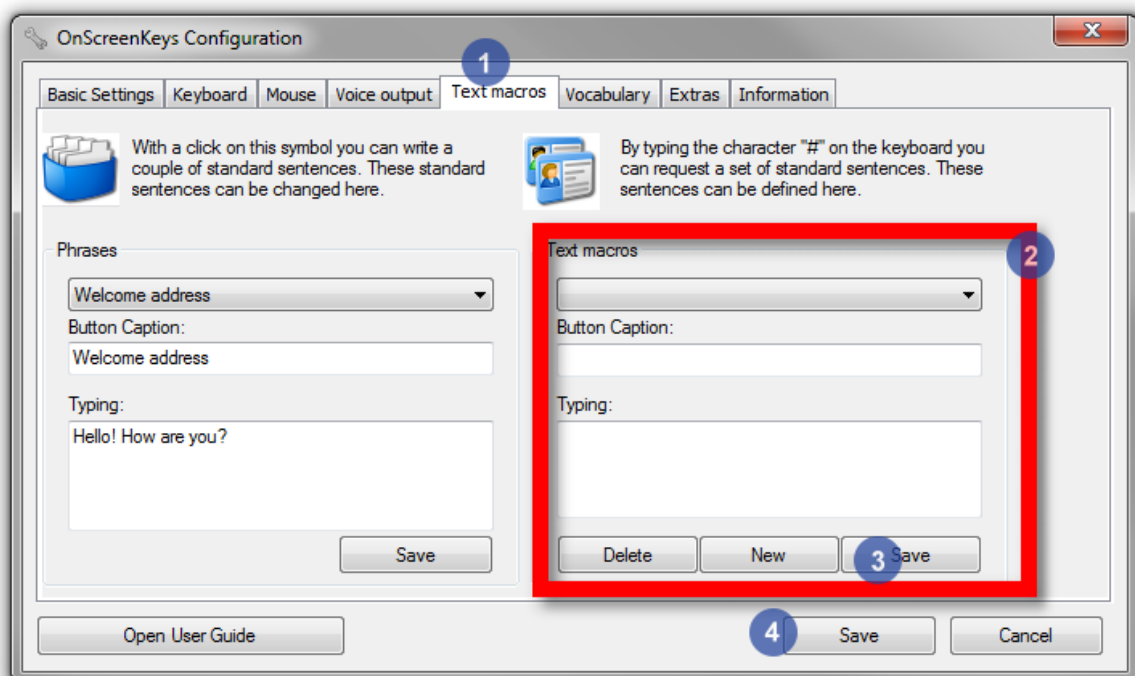
Creating text macros:

Open up the Configuration Window and click the 'Text Macros' tab.

Click the 'New' button on the right, then enter a name, and the text that should later be written.

Afterwards click the button **New**.

You may now enter new paragraphs.



Invoking Text Macros:

Click the hash symbol (#) on the keyboard.

If the hash symbol is not visible, click the Shift key.

Begin typing the name of a text macro until it shows up in one of the 10 word prediction buttons.

Click the appropriate word prediction button to have the stored text written out.

If no text macros (text macros all begin with a hash symbol - #) are displayed in the word prediction button, there are still letters in the buffer. In such a case, click the Enter key first, then click the hash symbol, and start from the beginning again.

SUPPORT

Support is provided by your distributor or directly from the producers:

tom weber software
Damaschkestr. 18
64297 Darmstadt
Germany

Tel: 0049 - 0160-93277241
mail@onscreenkeys.com

UPDATES

This website provides periodic news about free updates and new features:

<http://www.onscreenkeys.com>

CRITICISM AND SUGGESTIONS

We would be happy for you to tell us if something about our software does not perfectly meet your needs or if you have any suggestions on how to improve **OnScreenKeys**.

Please send an email to

mail@onscreenkeys.com

DISTRIBUTOR NOTE

Your advisor/distributor: