

## ONSCREENKEYS **5**

Windows XP<sup>®</sup> / Windows Vista<sup>®</sup> / Windows 7<sup>®</sup> / Windows 8<sup>®</sup> / Windows 10<sup>®</sup>

**PRODUCT DESCRIPTION**

This smart on-screen keyboard with virtual mouse click features and speech output allows for quick typing and working with the computer even if the hardware keyboard or computer mouse can not or only in parts be used.

**OnScreenKeys** can be used to type into any application, be it a text processing software, a spreadsheet program, an eMail software or an internet browser.

**OnScreenKeys** is often used on touch-screen systems or in combination with eye tracker, head mouses and many other alternative input devices..

Import parameters such as the keyboard's size and working speed can be freely adjusted. Text macros and personalized phrases make typing much easier.

**OnScreenKeys** contains more than 40 languages and allows for quick language changing so that even foreign-language texts can quickly be typed and be spoken by the computer voice.

**OnScreenKeys** uses the installed system voices and also allows connecting to any other SAPI voice. Available only in the "Deluxe" version



## THANK YOU

---

Dear user!

Thank you very much for choosing **OnScreenKeys**.

We tried our very best to create an effective and still easy to operate program for you.

**OnScreenKeys** is steadily being improved. Updates can be downloaded from our website.

We hope that our product meets your expectations.

If you have any question, you may reach us...

... by Phone: 0049 - (0)160 - 93 27 72 41

... by eMail: [mail@tomweber-software.com](mailto:mail@tomweber-software.com)

I wish you much fun at trying the software.

# Tom Weber

## PRODUCT ACTIVATION

---

After the 60 days trial period activating the software is necessary.

To activate the software, you will need the ProductKey which can be found on the next page as well as the InstallationKey which will be generated individually at installing the software. This means that product can only be activated after it has been installed.

Proceed as follows to activate **OnScreenKeys**:

- 1** Install **OnScreenKeys** on your computer, and start the software.
- 2** Select the option "**I purchased the software and want to activate it now.**". Afterwards click the button "**OK**".
- 3**
  - a)** If your computer is connected to the internet, enter your ProductKey in the appropriate textbox. Afterwards, click the button "**Activate online now**". Then follow the instructions on the screen.
  - b)** If your computer is connected to the internet, click the button "**Activate without internet connection**", and follow the instructions on the screen.

---

## YOUR PRODUCTKEY

---

Your ProductKey is:

## INSTALLATION

---

If **OnScreenKeys** was delivered on a CD, put it in your computer's CD-ROM drive. The installation will start automatically.

If the installation from CD does not start automatically, **osksetup.exe** on the CD should be started manually.

## INTRODUCTION

---

The software **OnScreenKeys** is a typing and communication aids for people who are unable to use the common hardware keyboard or computer mouse.

The software does the clicking of keys and mouse buttons automatically for the user. The user merely needs to move the mouse pointer to the desired key which will then be triggered automatically after a certain dwell time.

**OnScreenKeys** is always shown on top of other windows so that you may send text to any other window (e. g. a text processing software, an internet browser, etc.).

In the "Click" and in the "Deluxe" version **OnScreenKeys** provides a mouse click feature by which mouse clicks can be executed even beyond the keyboard.

The "Deluxe" version of **OnScreenKeys** provides a computer voice speech option through which typed text can be output by the computer's loudspeakers. Integration of any computer voices that comply with the SAPI standard is easily possible.

## FIRST START

---

To start the software, click the icon "**OnScreenKeys**" on your desktop, or invoke it from the program group "**OnScreenKeys**" in the start menu.

The software will automatically detect the language of your Windows® version and configures itself accordingly.

You may choose a different language as well as edit many parameters in the configuration window. You may open up the Configuration Window by clicking the Settings button on the on-screen keyboard.



## BASICS OVERVIEW

---

To type with **OnScreenKeys** (just like when typing with the normal computer keyboard) a text window has to be open, and the blinking cursor has needs to be visible in that window.

At program start, a text editor will be opened up automatically.

You may deactivate this function in the Configuration Window or choose another text editor.

To trigger keys on the on-screen keyboard, you merely have to move the mouse pointer over the desired key and keep it there for a little while. The key will automatically be clicked after a certain dwell time.

In the configuration window you may deactivate this auto-click function or change the dwell time.

Word auto-completion and word prediction

**OnScreenKeys** provides double quick type support:

> Word Auto-Completion: As soon as you typed the first letter of a new word, word suggestions will be shown in the 10 word buttons which you may type by a click.

> Next-Word-Suggestion: As soon as you completed one word, the 10 most probable next words will be displayed.

Writing Style Adaption

**OnScreenKeys** provides a comprehensive dictionary by default. Additionally, the software learns new words and sentences as you type them and adopts to your writing style.

Additionally, personal documents and letters can be imported in order to make the software adapt to your writing styles even quicker.

Phrases and Text Macros

You may write short phrases or entire paragraphs that you have stored before by the click on a button.

Further information about this topic can be found on the follow pages.

Speaking (available only in the "Deluxe" version)

At actived speech output each typed sentence will be spoken at a press on the Enter key. If the Enter key is then pressed again, the last sentence will be spoken on ce again.

You may configure **OnScreenKeys** so that each word is spoken immediately after typing it.

Automatic Starting

You may have **OnScreenKeys** automatically started up with Windows®.

This option can be activated or deactivated in the Configuration Window in the tab "Extras".

## DIFFERENCES TO HARDWARE KEYBOARD

---

This is an overview about keys and functions that are not to be found on the normal hardware computer keyboard:



Delete Key

Deletes the last key



Delete Word

Deletes the last word



Basic Settings

Opens up the configuration window



Click-Pause

Temporarily disables the Auto-Click

By triggering the lock, the Auto-Click function will be paused until it is being activated again by a click on the same button.



Extended Keys

Shows further keys (e. g. mathematical keys) and special commands



Word Shift Key

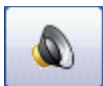
Changes the last typed word's case



Change Dictionary/Change Language

Temporarily changes the language

The corresponding keys, the dictionary and the computer voice will be set according to the newly selected language. The desired voice has to be selected in the configuration window first (available in the "Deluxe" version only).



Temporarily Disable/Enabled Speech Output



Enter (and speak last sentence)

**MOUSE BAR (available in "Click" and "Deluxe" version only)**

If you have problems pressing down the normal computer mouse's buttons, you may emulate mouse clicks with **OnScreenKeys**.

Take a moment to think about which mouse click you will need to do (e. g. simple click, double click, right click or Drag&Drop click)..

For example in order to open up a file on the desktop, you will need to do a double click. Select the appropriate mouse click (see below), and move the mouse pointer to the location where the click should be done. After a short while the mouse click will automatically be done at that location.



A click on this button opens up the Mouse Button Bar :



Mouse click type overview:



Left Click (simple click)



Double click



Right Click



Drag & Drop



Quit click functions & close mouse button bar

The mouse click parameters (e. g. movement tolerance, radius, tremor tolerance, etc.) can be adjusted in the configuration window.



## SPEECH OUTPUT ("Deluxe" version only)

---

The speech output can be activated/deactivated by a click on the following button:



Depending on the current status one of the following icons will be shown:



Speech output deactivated



Speech output activated



Speech output not available due to an error



The voice output is not available in the version that you purchased.

If the speech output function is activated, every typed line will be sent to the speech engine when the enter key is triggered.

If the Return key is pressed again, the last sentence will be spoken again.

You may configure **OnScreenKeys** so that each word is spoken immediately after typing it.

The computer voice that **OnScreenKeys** will be using can be selected in the configuration window.

If you communicate in multiple languages, you may select a different voice for each language.

## PHRASES

A phrase is a text module which will be frequently used, e. g. your own name and postal address, etc.

Up to 10 phrases can be set up in **OnScreenKeys**

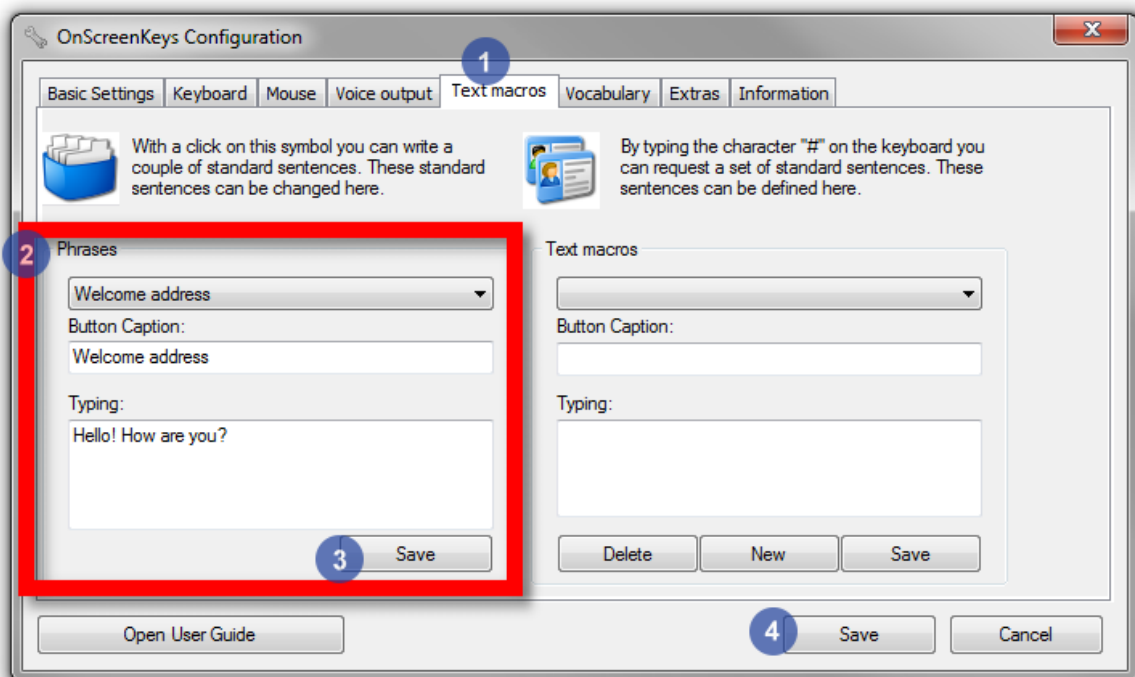
### Setting up phrases:

Open up the Configuration Window, and click the tab "Text Macros".

Select a phrase from the list of available phrases, rename it if desired, and replace the text by a text of your choice.

Afterwards, click the **"Save"** button that is located below the phrase that has just been edited.  
You may then proceed with editing another phrase.

When you are done editing phrases, click the configuration windows' "Save" button.



### Typing phrases:



Click the card box button.

Your customized phrases will now appear in the word buttons.

Click one of the buttons in order to have its underlying text written.

## TEXT MACROS

By the help of the text macro function an infinite number of paragraphs may be written.

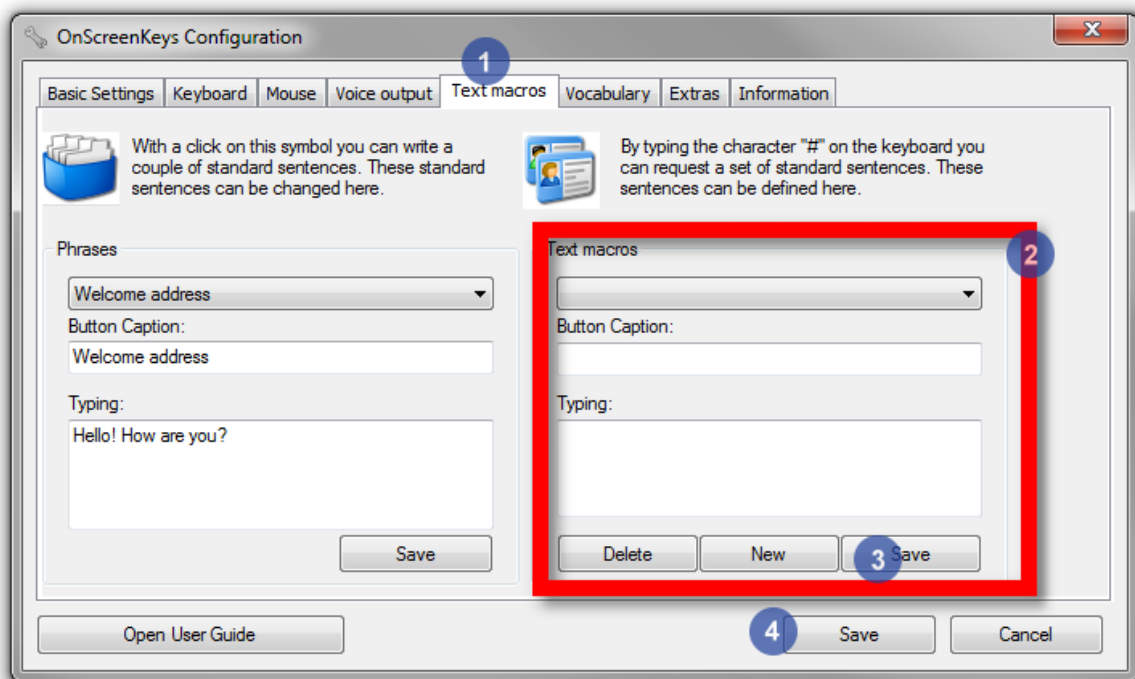
A consistent naming scheme is recommended because you will need to invoke the pre-written text later on by their namings.

### Creating text macros:

Open up the Configuration Window and click the tab "Text Macros".

Click the "New" button in the area on the right side, then enter a name and the text that should later be written.

Afterwards click the button "New".  
You may now enter new paragraphs.



### Invoking Text Macros:

Click the Sharp Sign (#) on the keyboard.  
If the Sharp sign is not visible, click the Shift key.

Begin typing the name of a text macro until it shows up in one of the 10 word prediction buttons.

Click the appropriate word prediction button to have the stored text written out.

If no text macros (text macros all begin with a Sharp character (#)) are displayed in the word prediction button, there are still letters in the buffer. In such a case click the Enter key first, then click the Sharp sign, and start from the beginning again.

## SUPPORT

---

Support is provided by your distributor or directly from the producers:

tom weber software  
Damaschkestr. 18  
64297 Darmstadt  
Germany

Tel.: 0049 - 0160-93277241  
[mail@onscreenkeys.com](mailto:mail@onscreenkeys.com)

## UPDATES

---

This website provides periodic news about free updates and new features:

<http://www.onscreenkeys.com>

## CRITICISM AND SUGGESTIONS

---

We would be glad if you tell us if something about our software does not perfectly meet your needs or if you have any suggestions on how to improve **OnScreenKeys**.

Please write an eMail to

[mail@onscreenkeys.com](mailto:mail@onscreenkeys.com)

## DISTRIBUTOR NOTE

---

Your advisor/distributor: